



Thank you for your purchase of Walker Evans Racing Shocks for your Yamaha Rhino. Below is some simple installation instructions to help you properly install these shocks.

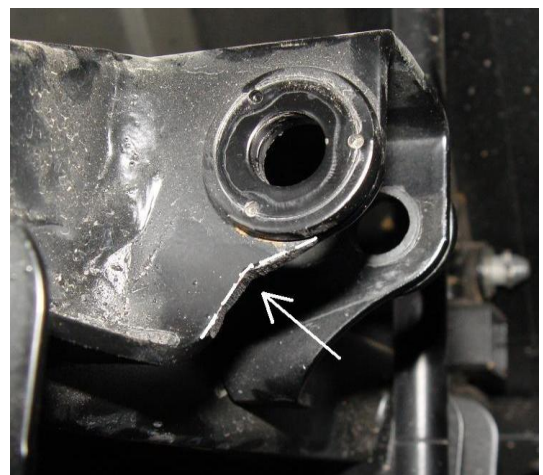
First. You will need to mark the corner of the front upper shock mount on both sides of the mount as indicated in the picture.



Using a grinder, grind both sides of the shock mount to the point that you marked. Once finished, file any rough edges smooth with a hand file. Mount the shock in place and cycle the suspension up and down while checking for clearance between the upper shock mount and the top of the shock body. If more clearance is need repeat this step from the beginning taking a little more off.



Repeat the same steps above for the rear upper shock mount.



If you have any further questions, please feel free to contact us.
Phone – 951-354-8272 Fax – 951-354-8599